

18 August

DISCOVER NSA Innovative Orientation

Bridget Hilder

DoD

³**iFEST**
#ADLiFEST





:DISCOVER NSA

The Future Starts Here!!!

Bridget Hilder
DISCOVER NSA, Technical Lead
Department of Defense

"...be a little more structured and formal about it. "

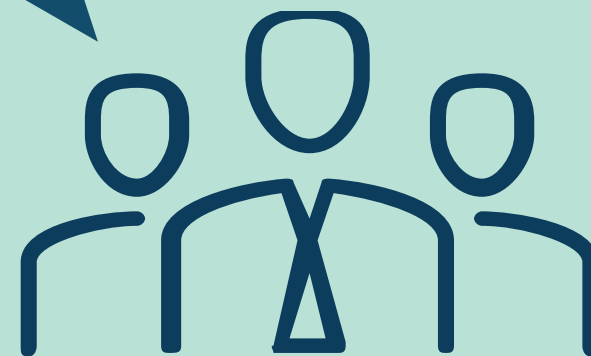
"The best presentations were one with stories and/or little to no PowerPoints."

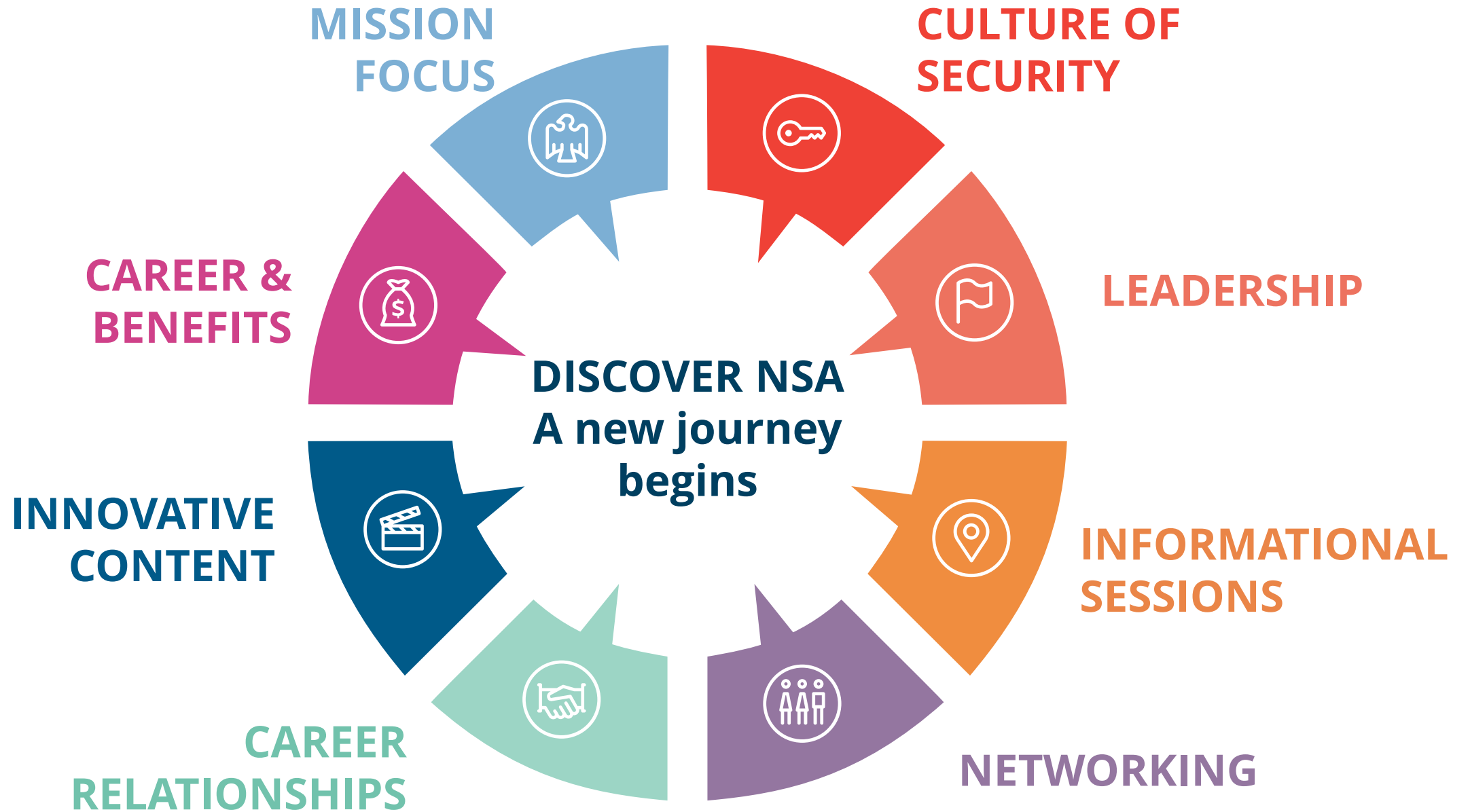
"...get immersed in the mission."

"Explains things in a logical order. Clearly set out expectations. Lessen the fear tactics and use more encouragement"

"Our people are essential to achieve mission impact. We want all newcomers to feel welcomed, valued and ready to contribute." - DIRNSA

DISCOVER NSA the journey begins







TECHNOLOGY UTILIZED

Accessibility same settings to control ambient music, sound effects, access keyboard controls and enable Accessible JAWS Mode. Our game has a 508 Scorecard Rating of 4.94/5.

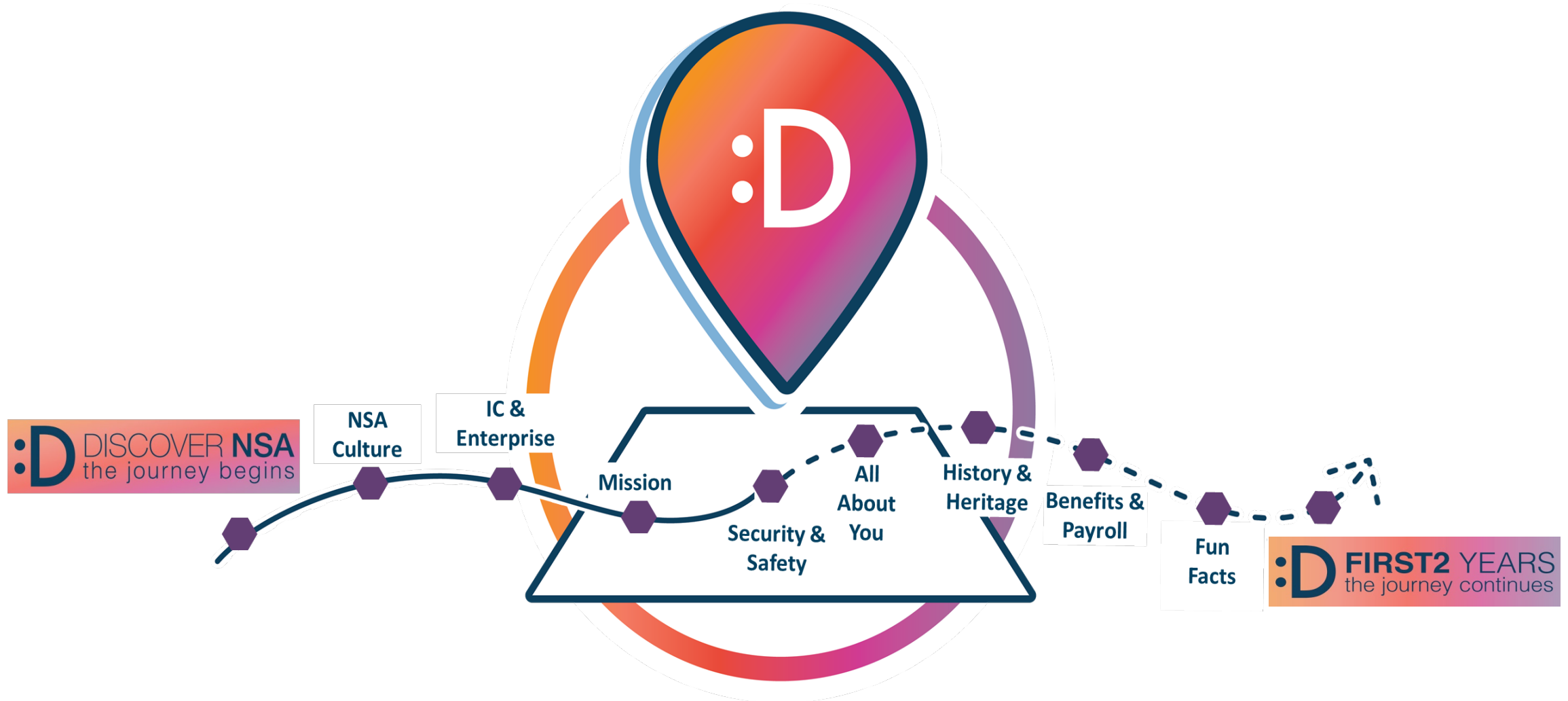
Content Management System created for player account management and textual updates to game content by DISCOVER NSA Development Team.

Player Progress Metrics player data logged includes current location in game, locations visited, last login, player data table. Use Tableau or Excel to create reports imported from the MySQL database. Proxy logs provide number of current players per server overall during the last session.

Unclassified Cloud deployed Docker containerized products for Enterprise-wide access during DISCOVER NSA and throughout DISCOVER NSA FIRST2 Journey.

Software Leveraged Unity, Captivate, Adobe Creative Suite, Blackboard, Maya 3D Modeling, HTML 5

DISCOVER NSA: THE JOURNEY BEGINS



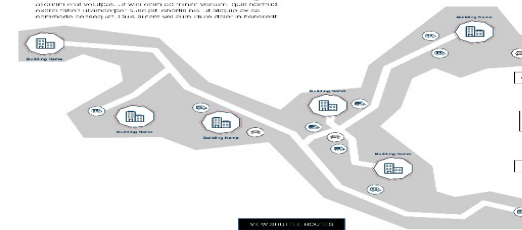
:D DISCOVER NSA

NSA's redesigned orientation provides an immersive, innovative, and engaging experience that increases the Agency's ability to retain top talent to ensure everyone feels welcomed, valued and ready to contribute.

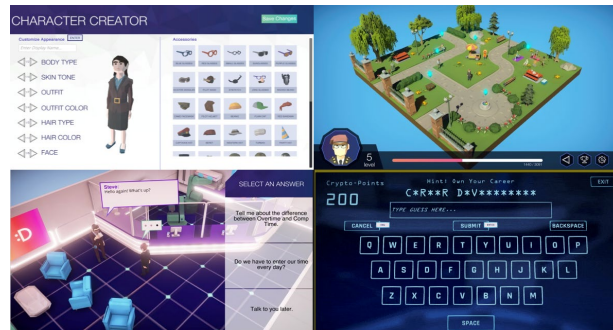


Content, Materials & Micro Videos

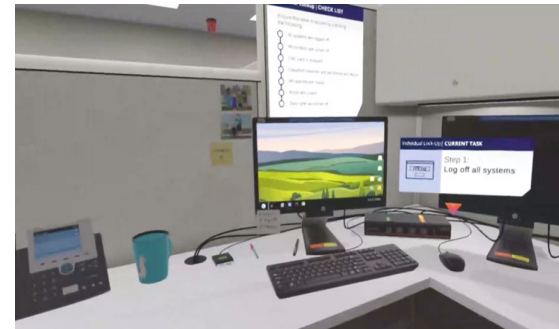
Welcome to the NSA Campus



Interactive Campus Maps

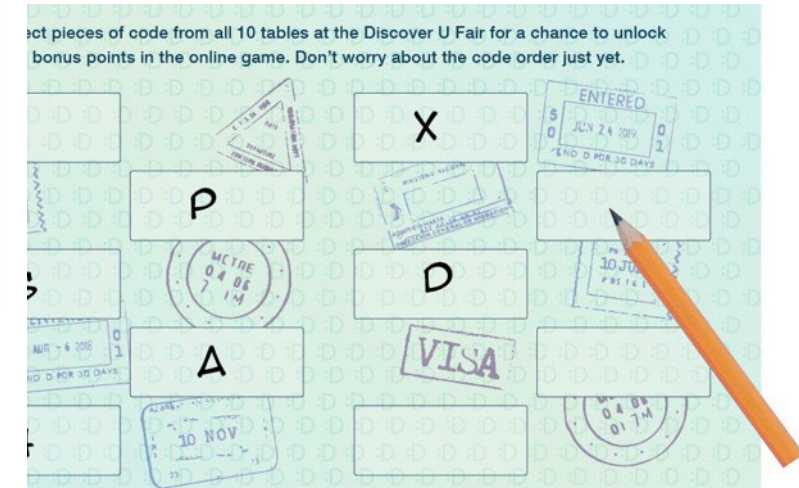
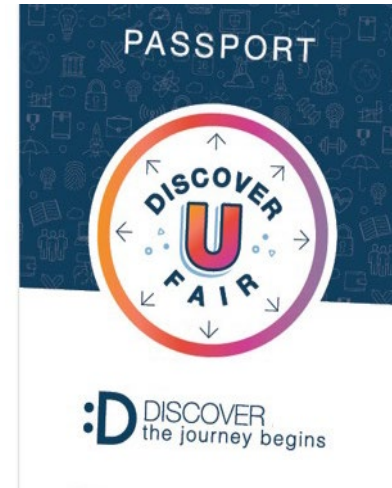


Online Game

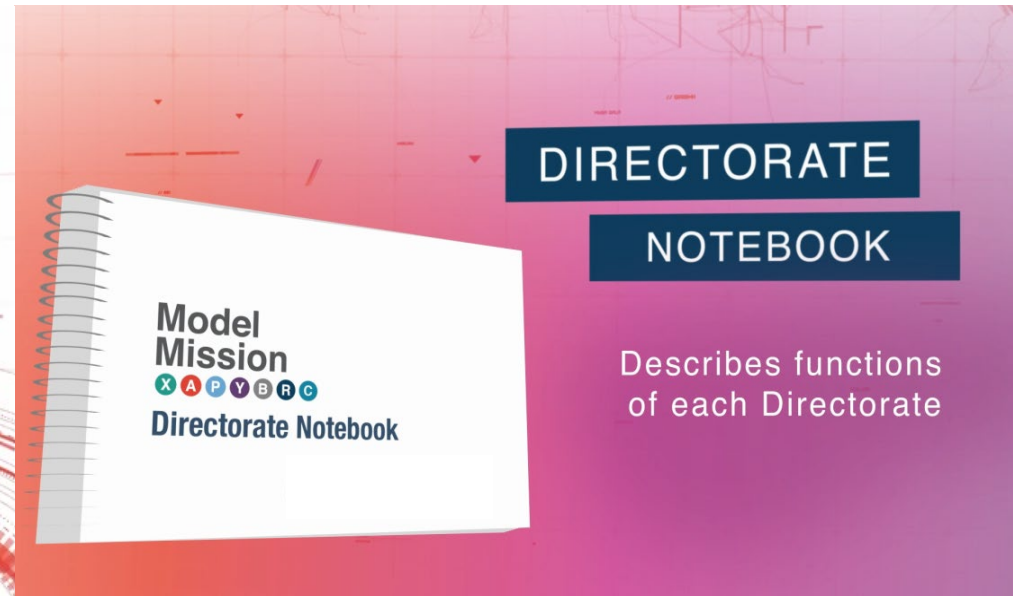


Virtual Reality

CONTENT, MATERIALS AND INSTRUCTIONAL VIDEOS

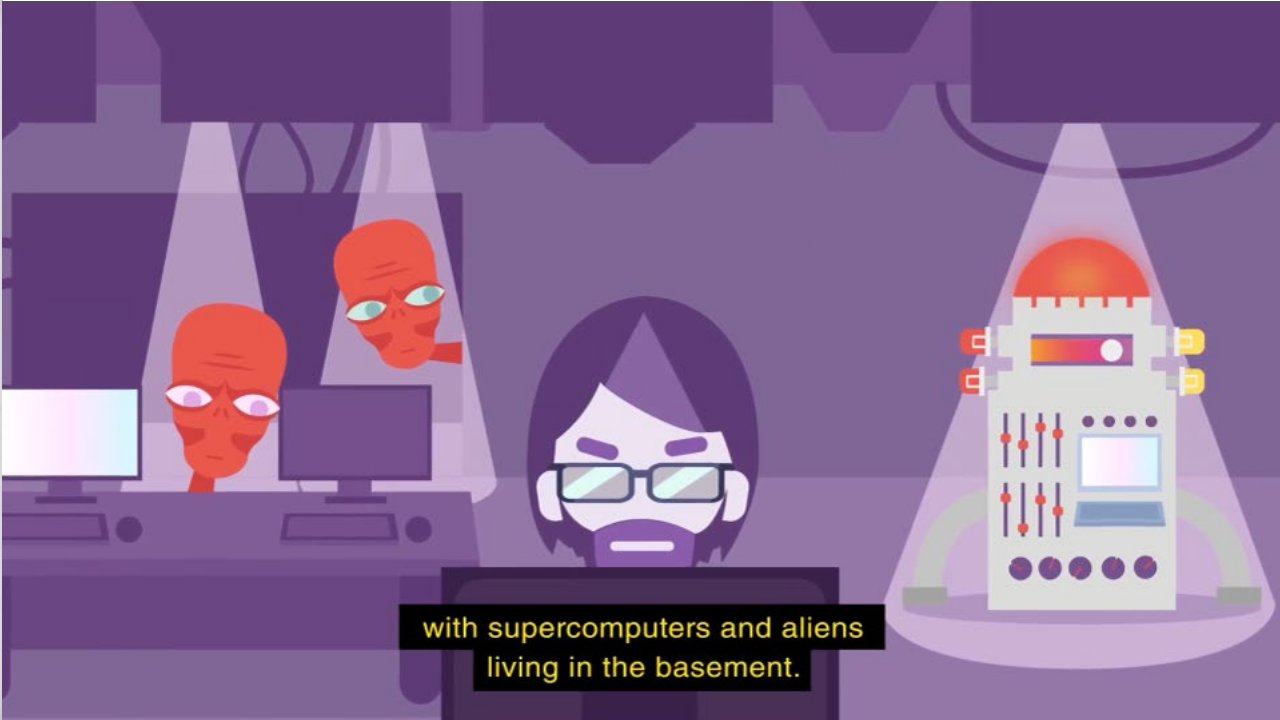


MODEL MISSION SIMULATION

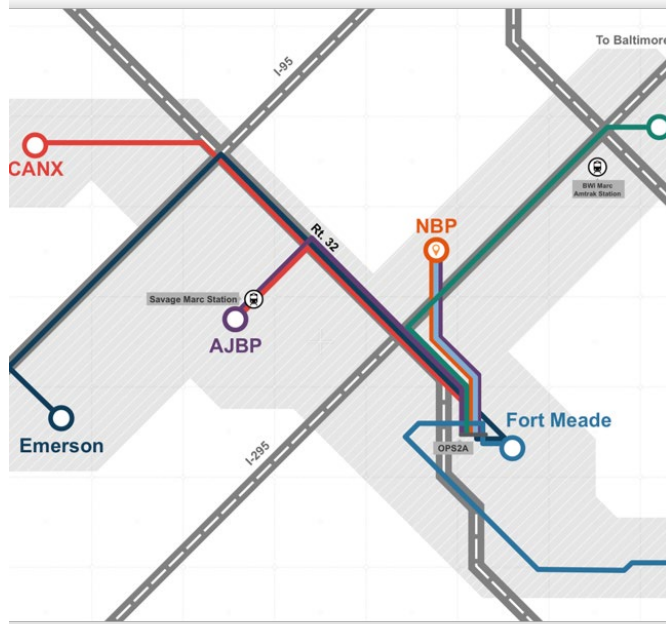




MICRO VIDEOS



INTERACTIVE CAMPUS MAP



NSAW Campus Overview



Detailed Campus Map

CANX

CANX (Columbia Annex) is a complex of buildings used by NSA in Columbia, Maryland. The complex is located at the dead end of Riverwood Drive off of Old Columbia Road in Columbia, Maryland. The CANX complex consists of three buildings and a Visitor Control Center (VCC): CANX 1, 2, and 3.

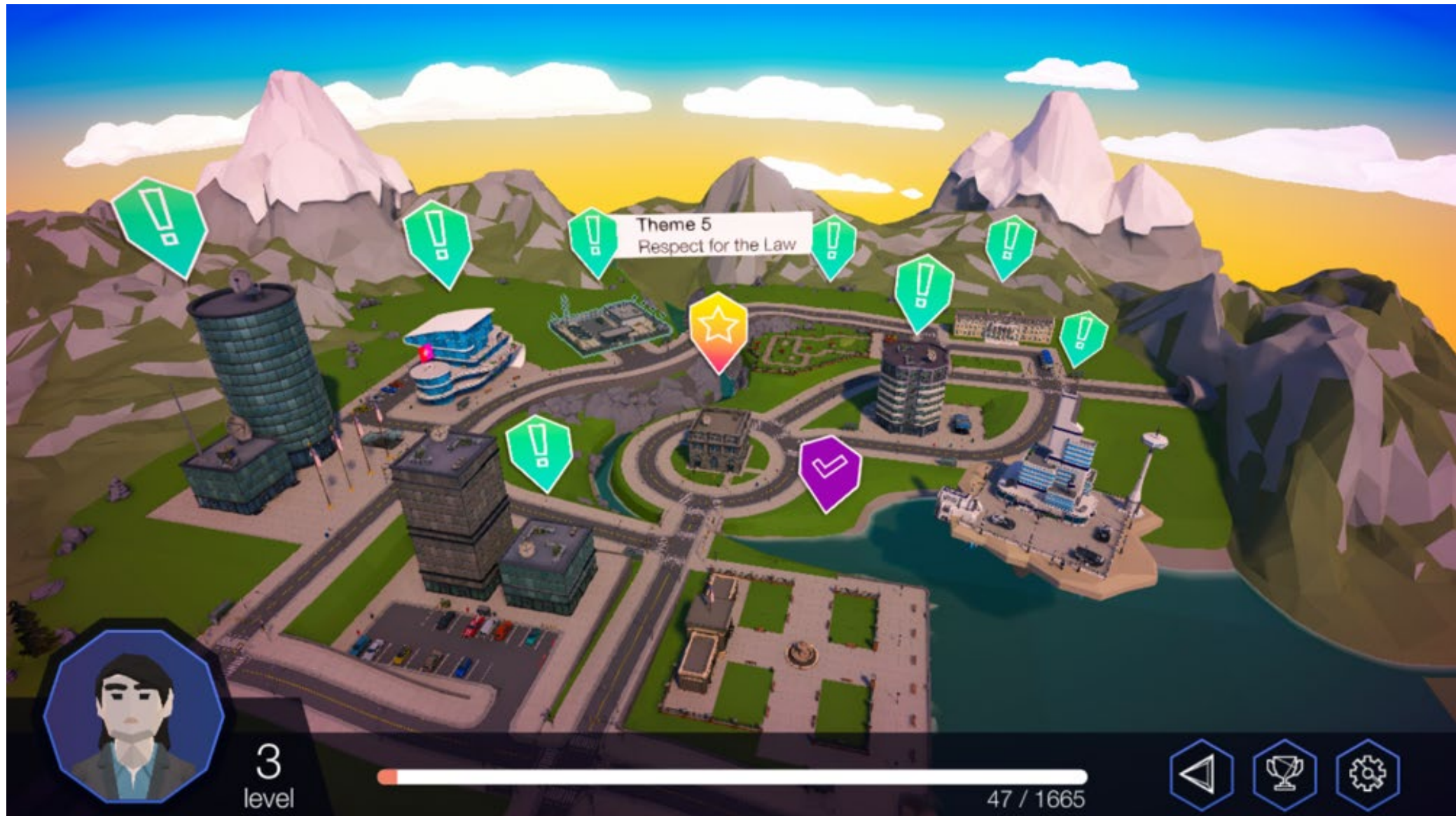
Points of Interest

CANX 1

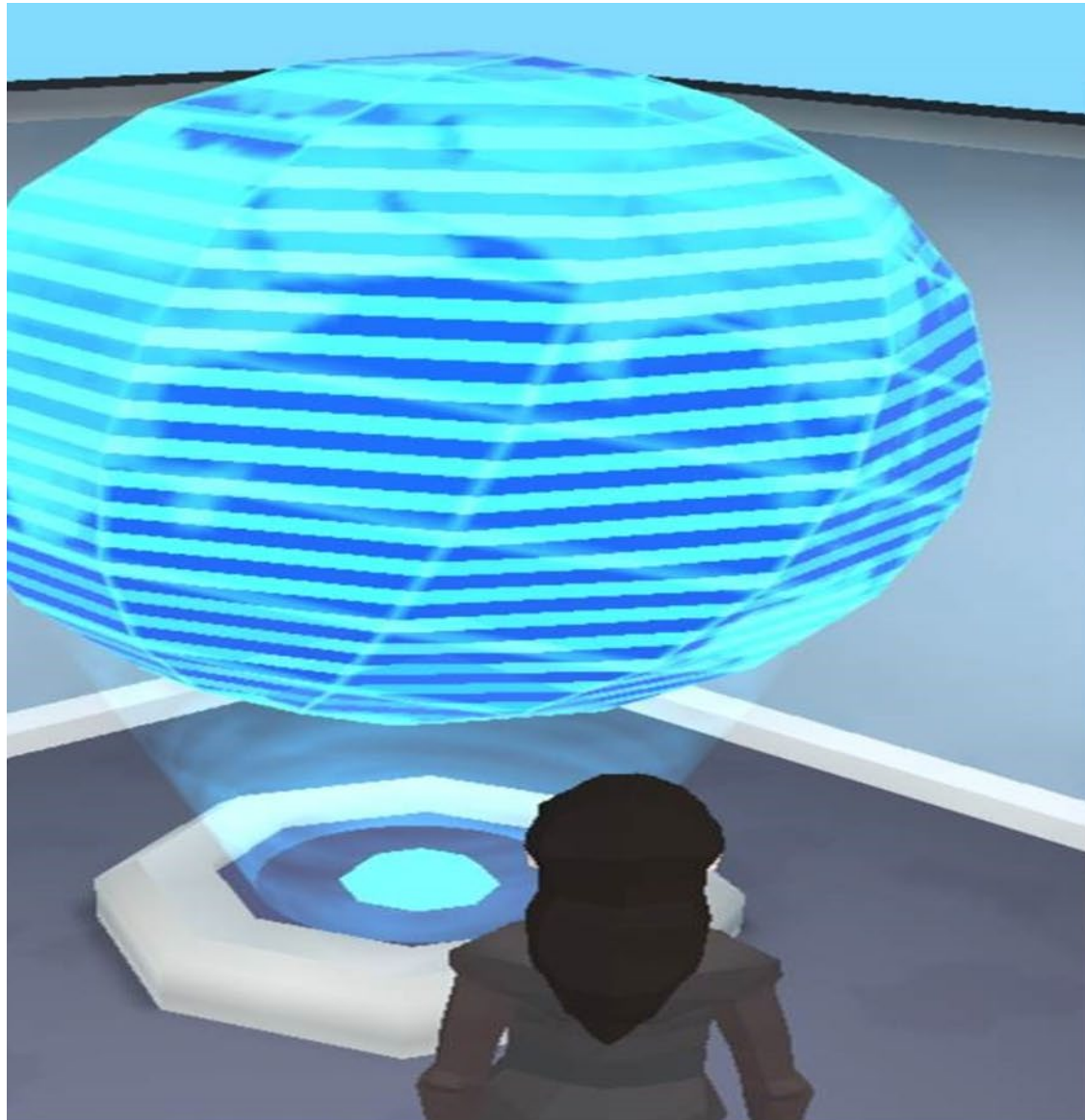
SHAPE Fitness Center

Description and Points of Interest

DISCOVER NSA: THE GAME



THE WORLDS



Select a Map



Mission Central

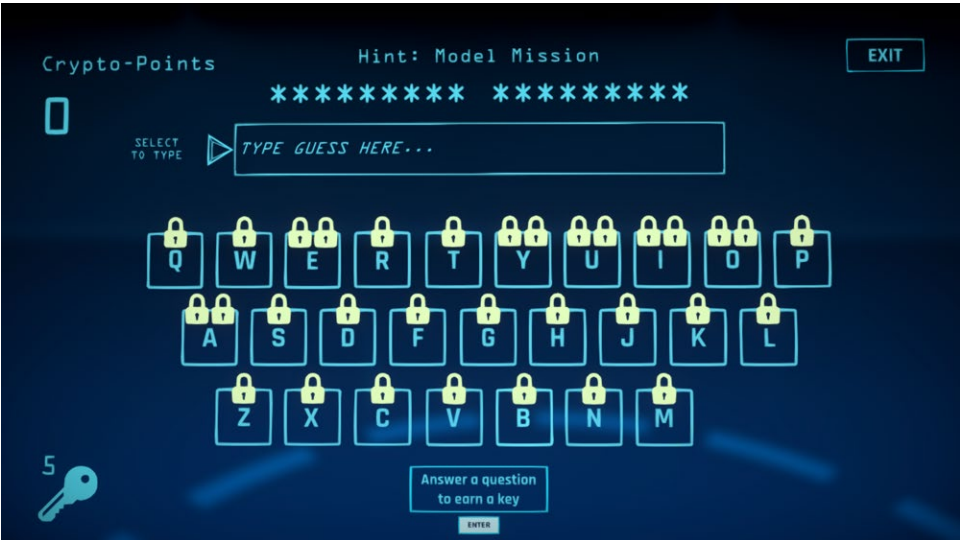
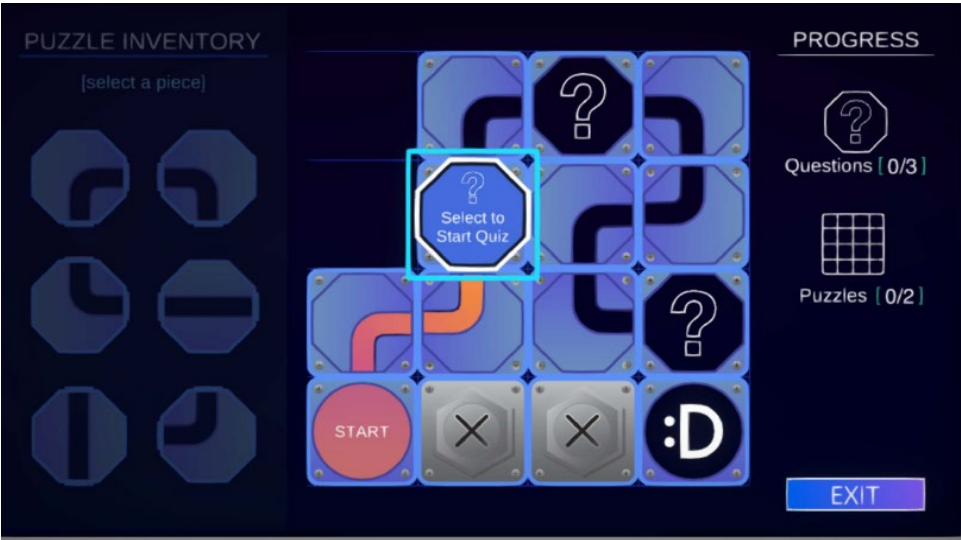
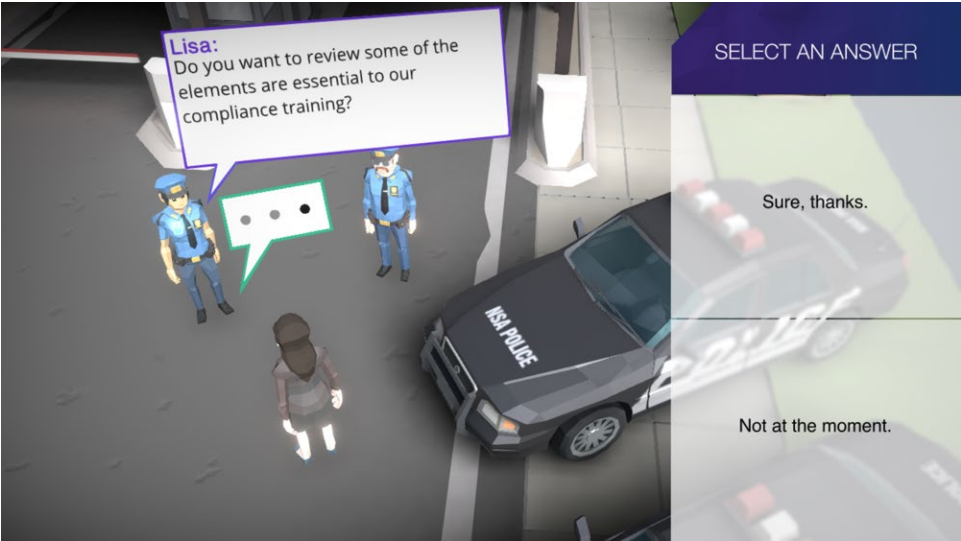
Kick-start your NSA knowledge at Mission Central, where you'll learn the ins and outs of the Agency and discover your place here!



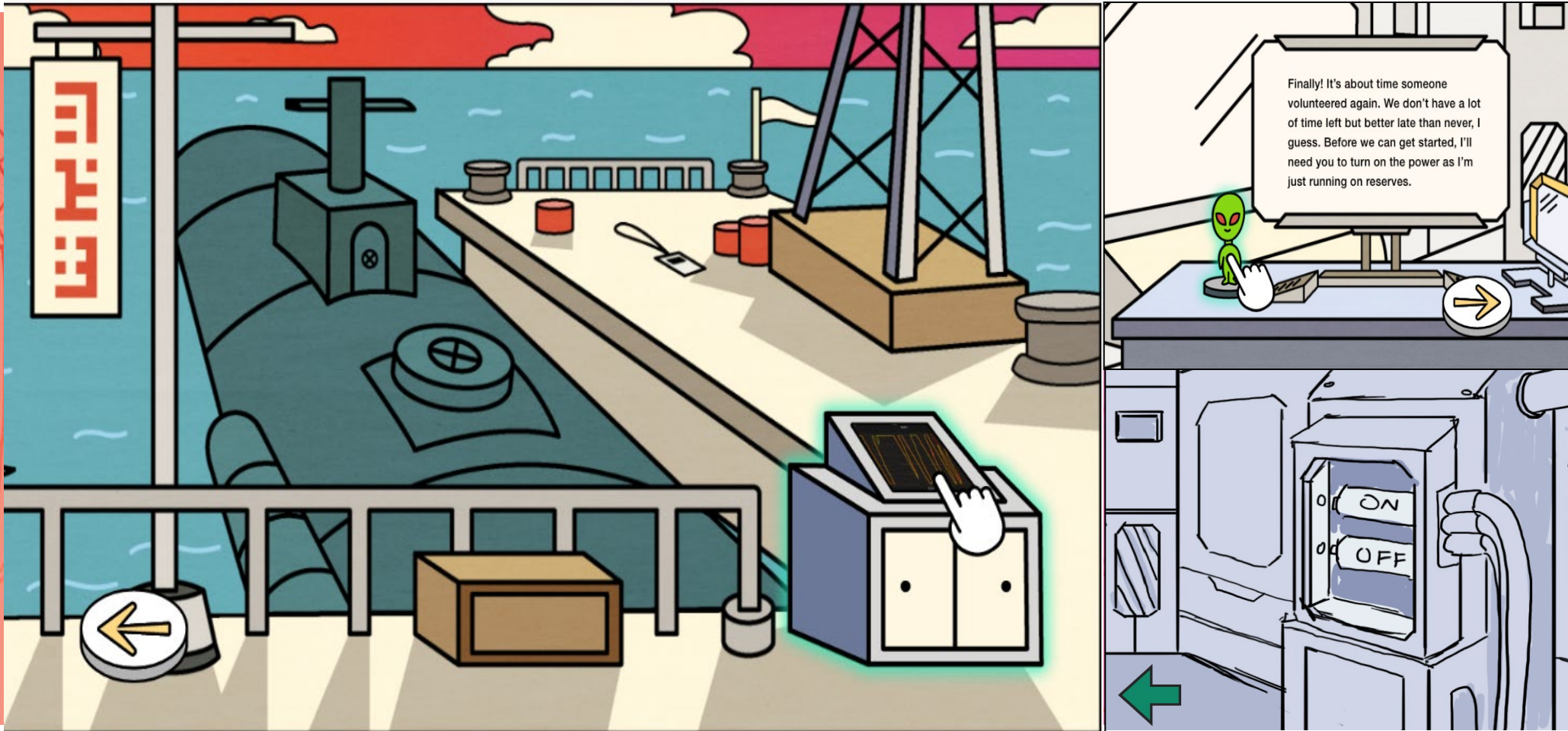
Mission Frontier

Explore and expand your Agency knowledge in Mission Frontier: then next destination in NSA expertise! Learn more about FIRST2, NSA's Directorates, and the global Enterprise!

THE FUN STUFF

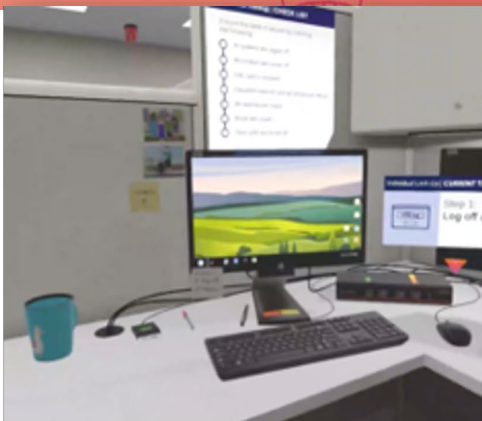


INTRODUCTION TO INTELLIGENCE GAME



FIRST2 YEARS the journey continues

VIRTUAL REALITY EXPERIENCES



Security Locker
Checker Procedures



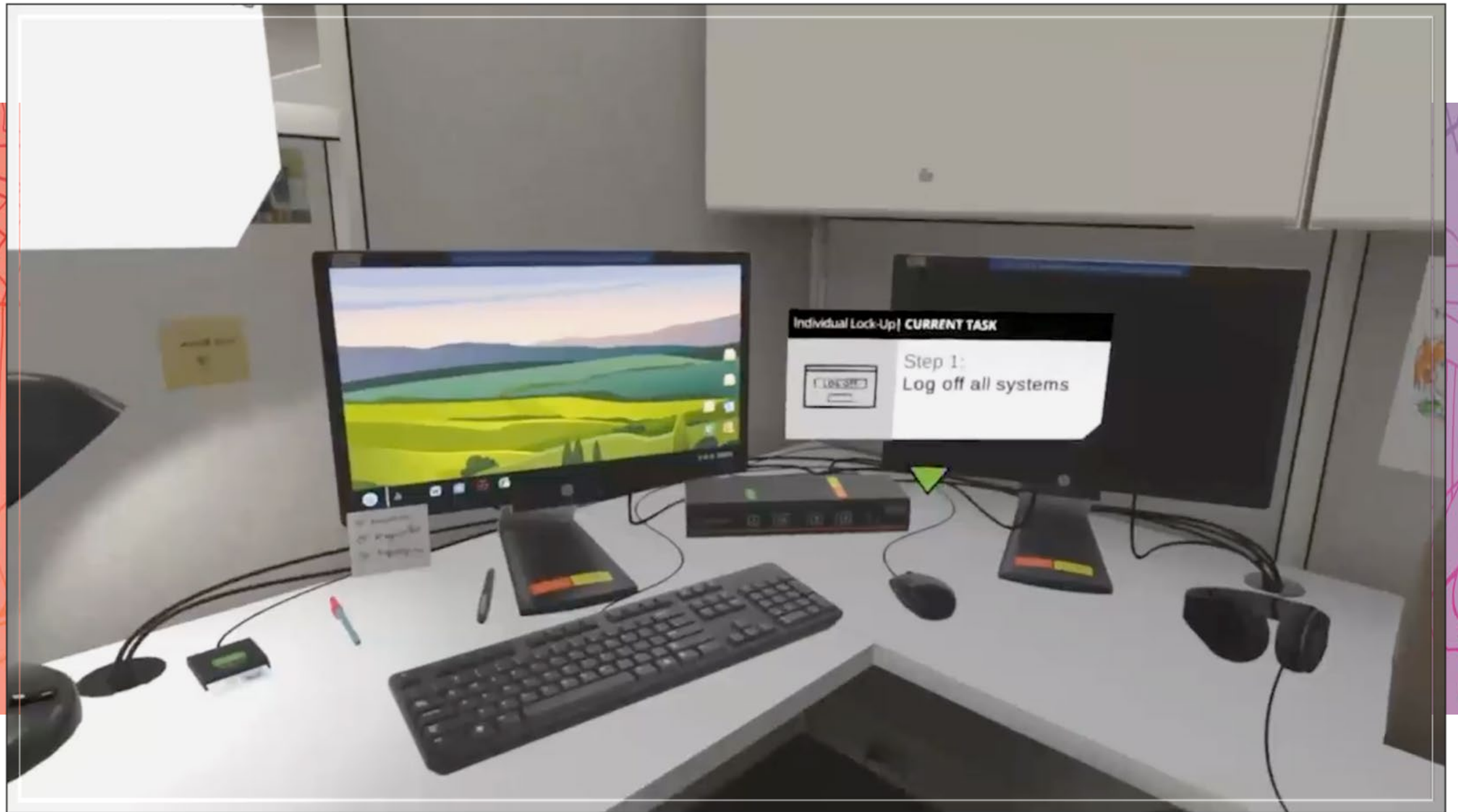
National Security
Operations Center



Security Operations
Command Center



Interagency
Cybersecurity Center



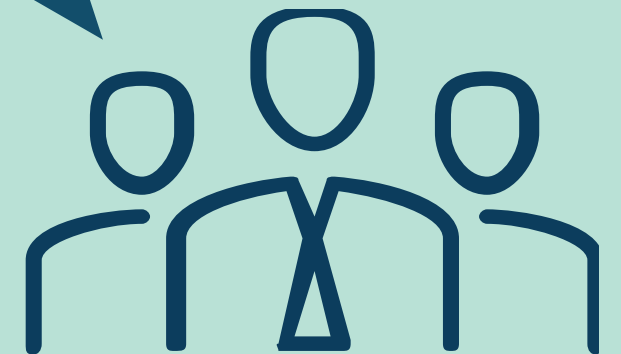
"I love how much information is in the game and how it is compartmentalized."

"Enjoyed the informative videos, particularly about classification and OPSEC."

"It's nice to balance this first week with work in person and teleworking, making the transition into everything easier. "

"I liked the '360 SOCC Video' the most, I found it both interesting and engaging. "

Here is what they are saying now!



DISCOVER NSA the journey continues

Thank you

Bridget Hilder
DISCOVER NSA Technical Lead
behilde@uwe.nsa.gov

We only get one chance to make a good first impression.

